

# Basteltechnik: Schmuckgestaltung mit der Texturmatte

## Instructions No. 1299

In this **handicraft instruction**, we show you how you can quickly and easily create your own jewelry with **texture mats and Modelling material**. At Jewellery tinkering with the texture mat **Modelling clays** such as.. FIMO for the handicraft technique you **need** Modelling clay, a texture mat, a Cutter-Knives, jewelry blanks, a kneading machine, double-sided Adhesive tape and modeling tools.



## Here's how it goes

**1.Step:** First, the Modelling clay is rolled into a plate with the help of the **kneading machine**. The texture plate is now placed on the rolled out plate with the **motif facing down**. Now take a **modelling roller** and roll it over the back of the texture mat to **emboss** the pattern.

**2.Step:** Turn the texture mat so that the Modelling clay is at the top of the texture mat. To **transfer the pattern of the texture mat evenly, you can additionally** press Modelling clay into the texture mat with your fingers.

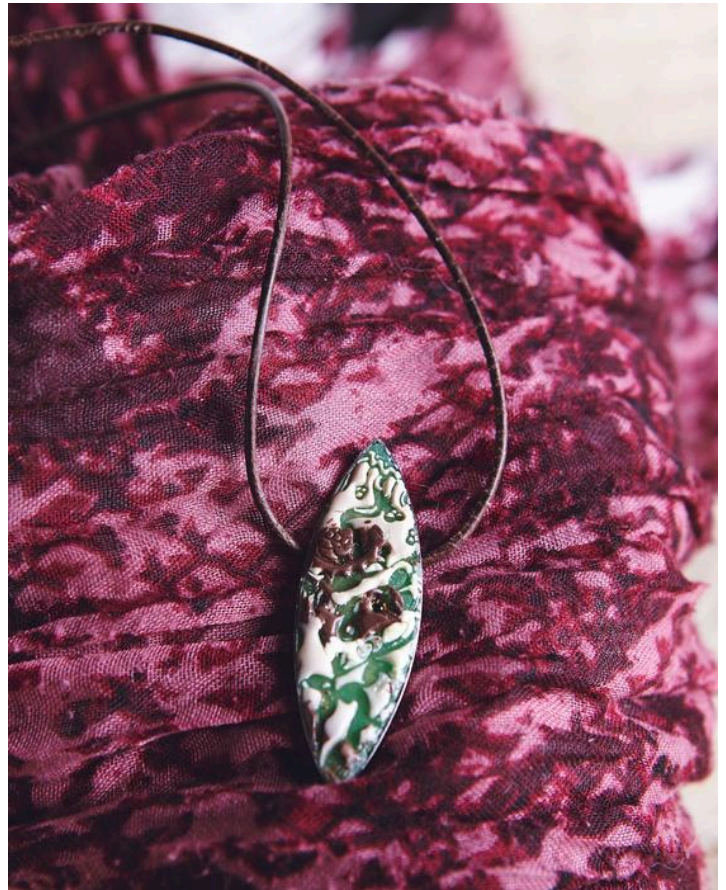
**3.Step:** Peel off the excess mass with a **Cutter- knife**. Now only should still be the remaining mass in the **recesses of the texture mat**

Step 4: Roll out another Modelling clays-plate using the kneading machine. To achieve a nice **color effect**, use a different color. Place the texture mat already filled with the first layer Modelling clay on the new **Modelling clays plate**. Roll over the back of the texture mat with a modelling roller. By unrolling the filled texture mat again, the first color in the **structures of the mat** is transferred to the Modelling clays-plate.

**5.Step:** To adjust the **embossed Modelling clayto** the size of your jewelry blank, you can carefully press it from the back into the Modelling clays-plate and punch it out. An easier way is to use a Cutter-Knife to cut out the approximate size of the blank. The cut out Modelling clay can be put into the **jewelry blank**. It is advisable to press the edges slightly into the frame of the jewellery blank, as **the Modelling clay may** shrink slightly when hardening **in the oven**

**6. Step:** The Modelling clay (FIMO) is cured in the oven at 110° C for about 20 - 25 minutes.

**7.Step:** To give the jewellery a **special shine**, you can add some FIMO-Paint can be applied with a brush.





**Extra tip:** If you feel like it, you can press a few more Swarovski crystals into Modelling clay



Not only **Chain pendants** can be designed with the texture mat, and rings can also be made into a fashion highlight with the help of the multi-layer **Modelling clayand** texture mat.

## Article information:

Article number	Article name	Qty
671729	Ring mechanism, 4 pieces	1
511148	FIMO Cutter	1
511483	FIMO Acrylic Scooters	1
110587	FIMO gloss varnish	1