

Chains from wire and jewellery beads

Instructions No. 597

🔪🔪🔪🔪 Difficulty: Beginner

🕒 Working time: 40 Minutes

Sturdy aluminium wire forms the basic form of these opulently equipped pendants. You can combine your favourite beads as you wish and also incorporate elements of shiny metal.

Here's **how it works**

Make an eyelet from aluminium wire with the round nose pliers, then bend it into a circle or rectangle. These are the basic shape of the pendant.

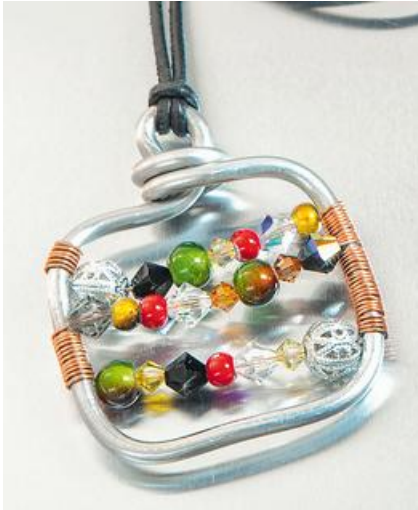
Wrap the end of the wire twice around the eyelet to fix it, nip it off with the side cutter and press it on with the pliers so that no ends stick out.

For the round pendant, thread Swarovski and aluminium filigree beads, Miracle Beads and gemstone pendants onto the bouillon effect wire and wrap tightly around the wire ring until it is completely covered. Shorten the end to fit and press on.

For the rectangular pendant, wrap the copper wire six times tightly around one side of the pendant, then thread the Swarovski and aluminium filigree beads and Miracle Beads, stretch the wire through the middle and wrap 11 times tightly around the other side of the pendant

Thread new beads and stretch them again through the middle, wind 20 times tightly around the other side, repeat the process again. Pinch off the end of the wire and press on.

Finally, thread a leather strap through the eyelet and knot the ends.



Wrap beads as you please!





Article information:

Article number	Article name	Qty
648783	Metal bead "Ringel", 4 pieces	1
631808	Aluminium wire 3 mm, silver	1
420037-02	Bouillon effect wireSilver	1
650656-70	Leather strap round, Ø 1 mmBlack	2
670081	Copper wire, tarnish proof, 0.6 mm	1
970014	VBS Assortment of pliers, set of 3	1