

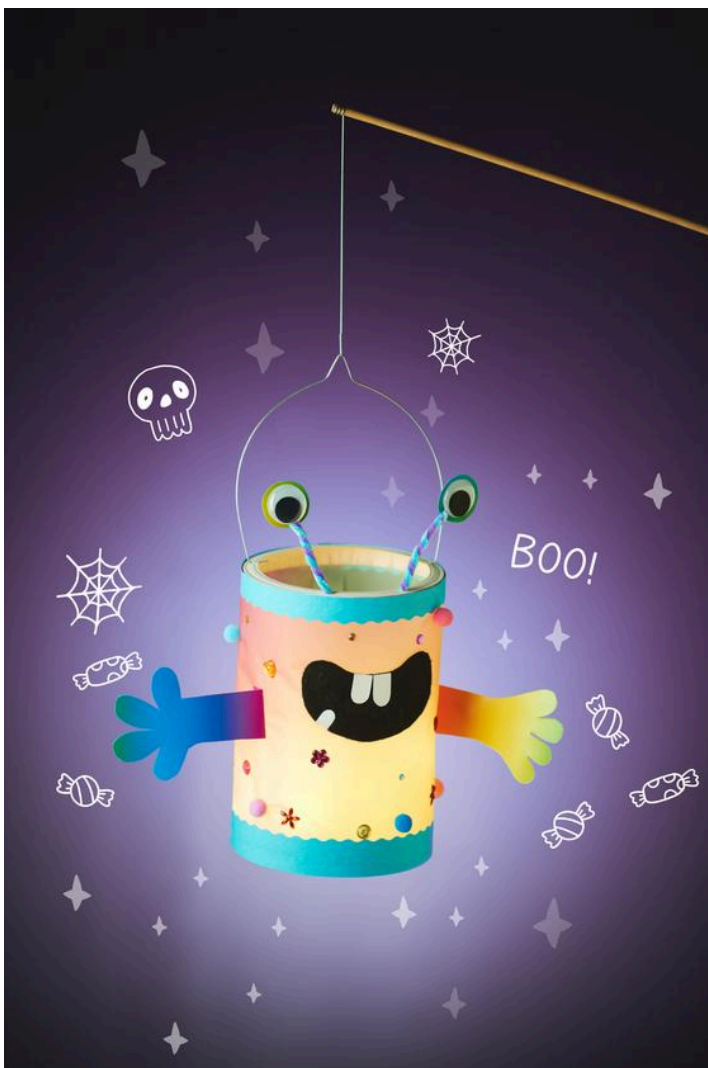
# Lantern monster

Instructions No. 3428

Difficulty: Advanced 🍴🍴🍴🍴

Working time: 2 Hours

Would you like to give your home a very special, homemade touch for **Halloween** or **lantern walking**? With our step-by-step instructions, you can **create** a unique **monster lantern** that will delight both children and adults. This creative craft idea is not only an eye-catcher at every lantern parade, but also a perfect way to let your imagination run wild. Let's dive into the adventure of crafting together!



## Make a scary, funny monster lantern: Creative fun for Halloween and lantern walking

### Step 1: Create a transparent base

To make the base of your monster lantern, first cut the vellum paper to the desired width. Then use handicraft glue to carefully attach it around the cheese box. Make sure that the Paper is attached tightly and without folds so that the light shines through evenly later.

### Step 2: Attach decorative strips

Take the contour scissors and cut out two strips of any thickness. These strips give the lantern stability and a decorative edge. Attach the strips to the top and bottom of the lantern using handicraft glue vellum paper.

### Step 3: Transfer the templates

Cut out the templates provided. Use the Strich-Ex pen to transfer the shapes onto the black felt, intended for your monster's face. Repeat this step for the teeth on white craft cardboard sheet and for the eyes and hands on the rainbow-craft cardboard sheet.

### Step 4: Create funny eyes

Twist two chenille wires in different colors and cut them in half. Glue a wiggly eye onto a colorful, cut-out circle and place it on top of one half of the chenille wire. Make two funny eyes in this way.

### **Step 5: Attach the eyes**

Use the awl to create two small holes in the top front edge of the cheese box. Push the unglued ends of the chenille wires through, bend them over and attach them to the inside of the box using handicraft glue .

### **Step 6: Attach the lantern hanger**

Use the awl to punch holes opposite each other in the middle of the cheese box. Bend the lantern bracket to fit and insert it through these holes. The bracket allows you to easily attach your lantern to a lantern rod later on.

### **Step 7: Attach the arms**

To add the finishing touches to your monster look, bend the prepared arms slightly and glue them to the vellum paper, directly opposite each other using handicraft glue . This will make your lantern look alive.

### **Step 8: Design the face**

Complete the face by gluing the teeth to the mouth made from felt and attaching it between the two arms on the lantern. This will give your monster a friendly or cheeky grin.

### **Step 9: Add decoration**

Use pompoms and gemstones to add personal touches to your monster. Stick these onto the surface of the lantern using handicraft glue and decorate as you wish.

### **Step 10: Insert the light source**


Now only is missing the light! Place a candle, a tea light or a battery-operated chain of light in your lantern. Please note that real candles can pose a fire risk, so LED tea lights or chains of lights are a safe and recommended alternative to light up the monster safely, making your monster light a real highlight in the dark.

Now your monster lantern is ready for its grand entrance! Visit our online store to discover the best creative and craft materials and create lots more scary and funny monsters for your Halloween night. Have fun crafting and getting spooky!

Must Have

Lantern bases/lids "Large", 10 pairs

● 5,49 €

 Item details

Quantity:



1



Add to  
cart



## New instructions

Straight to your inbox every week

[register now >](#)

## Article information:

| Article number | Article name   | Qty |
|----------------|--|-----|
| 650120-40      | VBS Craft felt, 20 x 30 cmBlack                      | 1   |
| 832342         | VBS Gemstones "Colors & shapes mix", 430 g           | 1   |
| 347556         | KREUL Disappearing ink pen                           | 1   |
| 671637         | Awl  | 1   |
| 21906          | VBS Contour scissors, set of 6                       | 1   |
| 20786          | VBS Pompoms "Basic"                                  | 1   |
| 689793         | VBS Micro LED chain of lights, with timer, 20 LEDs   | 1   |
| 701174         | Tealight holders for lanterns, 10 pcs.               | 1   |
| 706681-00      | Craft cardboard sheetWhite                           | 1   |
| 700160         | Lantern bases/lids "Large", 10 pairs                 | 1   |
| 706681-30      | Craft cardboard sheetLight blue                      | 1   |
| 706834         | Rainbow Craft cardboard sheet                        | 1   |
| 620797         | VBS Wobbly eyes to glue on "Round", 30 mm, 10 pieces | 1   |
| 111065         | VBS Handicraft glue85 g                              | 1   |
| 630535         | VBS Chenille wire "Colormix", 50 cm, set of 100      | 1   |
| 801317         | VBS Pompoms "Colors & sizes mix", 1.000 pieces       | 1   |
| 12326          | Vellum paper "Happiness"                             | 1   |
| 26829          | VBS Wooden lantern stick with LED light              | 1   |