

Lettering with glass mosaic

Instructions No. 2977

Difficulty: Advanced 🍴🍴🍴🍴

Working time: 8 Hours

Personalise your front door with this beautiful decorative idea. This welcome sign looks incredibly inviting and friendly, a real eye-catcher!





First, the lettering is partially painted with Chalky Outdoor Colour.

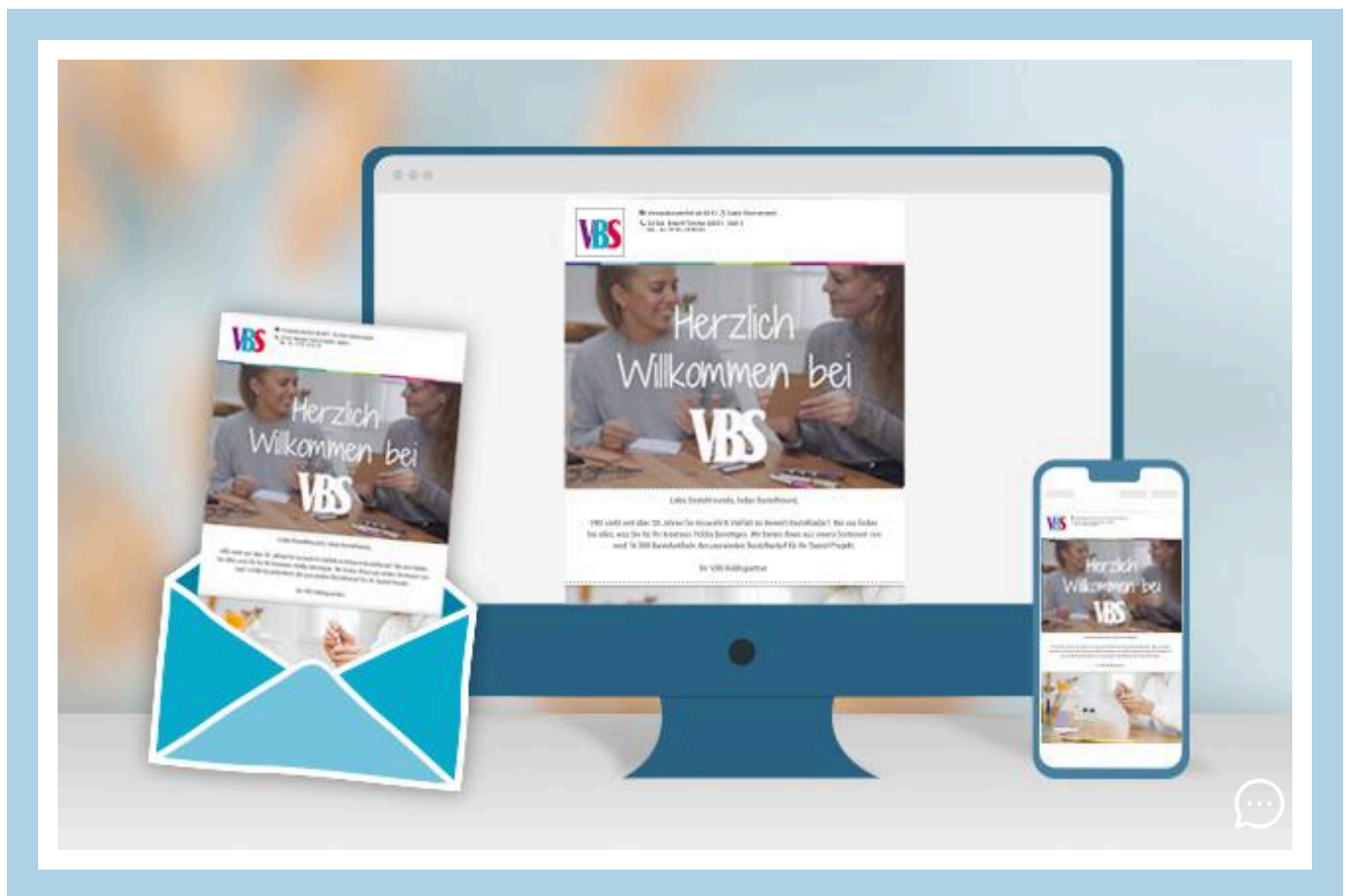
Once dry, the **glass mosaic stones** are glued onto the letters in the shape of flowers. You can then stick the **crackle mosaic** around the flowers as desired. You can use our example image as a guide here.

Tip: To get straight edges, you can mask off the lettering with masking tape.

Once this has dried, mix some **joint filler** with water to make a creamy mixture. Use a brush to apply the compound to the joints and spread it evenly. Remove any excess joint filler from the mosaic stones with a damp sponge.

Once the joint filler has dried, the stones must be wiped or polished with a dry cloth. Finally, the entire surface should be sprayed with **permanent spray** to protect it. This must be allowed to dry sufficiently and completely.

Finally, tie a **ribbon** to the loops on the back of the lettering.



New instructions

Straight to your inbox every week

Register now >

Article information:

| Article number | Article name | Qty |
|----------------|--|-----|
| 22769 | VBS Wooden lettering "Welcome" | 1 |
| 19797 | Glass mosaic stones "Diamond", colorful mix, approx. 180 gDrop | 1 |
| 466226-12 | Crackle Mosaic PlateBlack | 1 |
| 118026-01 | Transparent mosaic glue50 g | 1 |
| 465755-01 | VBS Mosaic-Joint FillerWhite (leider ausverkauft) | 1 |
| 118040 | Mosaic joint finish, 100ml | 1 |
| 755627-14 | VBS Chalky Outdoor Color, 100 mlAntique Grey | 1 |
| 12052402 | VBS Flat brush "BASIC", set of 6 | 1 |
| 330350 | VBS Painting sponges, 3 pieces | 1 |
| 13992 | Jute cord "Basic"Black | 1 |
| 70522 | Crepe-Adhesive tape, 50 m | 1 |
| 755290-02 | edding 5200 "Permanentspray", Clear varnishSilkmatt | 1 |