

Mixed Media wall picture with clockwork

Instructions No. 1984

Difficulty: Advanced 

Working time: **3 Hours**

Let your artistic creativity run free: In this mixed media idea, everything is allowed - you paint, fill, drill and glue. The at first sight elaborate work of art can be designed by anyone and this is not that difficult.

Preparation

For this mixed media picture you need a 50 x 50 cm and a 24 x 30 Painting board cm large painting ground. A clockwork will be installed later, with paint and wire, with motif straw silk and Leaf metal worked.

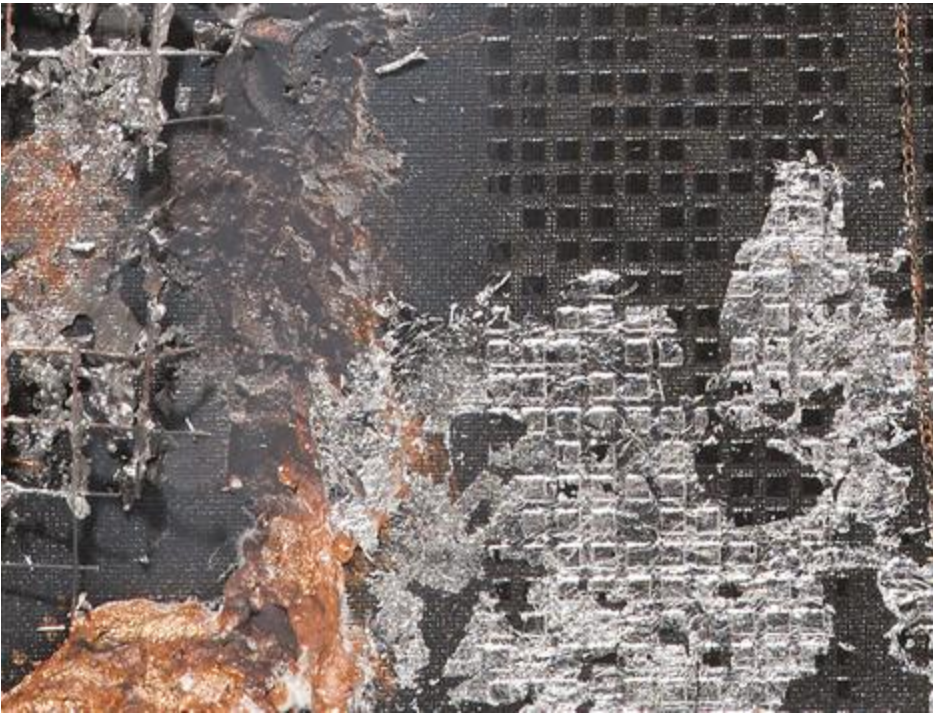
To make sure that the mural will later meet your expectations, first make a sketch Paper on a sheet of paper, on which you determine the desired picture layout.

Filling - wiping - brushing

Paint this one Stretched Canvas and this one Painting board with a **first coat of paint**

This Stretched Canvas can be made intensively abstract by applying coloured modelling cream, smudging it with one Paint sponge and additionally painting it on with the brush

After drying, arrange the clocks of the motif straw silk on the Painting board, stick them with patch glue: for this, coat the painting ground with the glue, stick it flat Paper and paint over it with a brush.



Use "Waves" and black stain cream for a **2nd layer of paint**: position Stencil Stretched Canvas the stencil, apply the pasty Spatula paint with one, Stencil carefully lift it up - an ingenious modern grid look is created.

Clockwork in picture

To integrate a functioning quartz movement into your artwork, it is necessary to drill a hole in the center of the largest clock shown. Through this hole the clockwork will be inserted Painting board into the clock from behind. It is best to test beforehand whether this is large enough

Position them Painting board on the picture as they will be glued on later. Sketch the contours of the movement on the Stretched Canvas and cut a cutout in the size

Fix with transparent paint gel spacers or small wooden wedges and Painting board, put the quartz clock on them from behind in the picture, put the clock hands on the front. Use painting gel for the fixation. So you can fill the battery compartment of the clockwork from the back.



Wire Installation

Cut a piece of wire mesh with pliers. You can fix it by simply stapling it to the back of the stretcher. Bend the wire as you want it to be arranged on your artwork. Fix it with transparent painting gel

This Painting board can also be decorated with wire. The finer wire mesh is easy to cut and lay on.

Extra tip for painting gel

Transparent painting gel is used in acrylic painting to make colours appear more intense. However, the silk-matt drying transparent Creame one is not only brilliant for many interesting optical effects, it is also a particularly good adhesive. Painting gel dries relatively slowly, but when dried it holds even heavy objects extremely well.




Add special accents to the picture according to your personal taste: work with coloured modelling cream, with and Leaf metal small accessories

As a special something you finally fix a painted, with wire decorated VBS Light bulb using an anchor chain on the Stretched Canvas. Additionally, you can decorate the light bulb with curved wire wings.

Must Have

[VBS Stretched canvas 50 x 50 cm](#)

● **6,99 €**

 [Item details](#)

Quantity:  

**Add to
cart**



Article information:

Article number	Article name	Qty
842457	VBS Canvas board 24 x 30 cm, 2 pieces	1
83355401	Drawing grid, 2x4mm, 40x100cm, aluminium coloured	1
970014	VBS Assortment of pliers, set of 3	1
570183-02	VBS Leaf metal, 40 sheetsSilver coloured	1
570022	KREUL Gold leaf priming milk, 50 ml	1
766449	VBS Light bulbs, 6 pieces	1
671194-02	Anchor chain, 1,9 mmSilver-Plated	1
29516	Florist wireGreen	1