

Sew Christmas trees

Instructions No. 3121

Difficulty: Advanced 

Working time: 4 Hours

Fancy **sewing** something **yourself** for **Christmas**? In this step-by-step guide, we'll show you how to **sew** beautiful **DIY Christmas trees**. They are not only easy to make, but also add a personal, festive touch to your home. Let's get creative together!



Sewing DIY-Christmas trees: Your personal Christmas project

Step 1: Preparation and transfer pattern

first transfer the pattern for the Christmas tree onto your fabric twice in folds. Remember to add a seam allowance of 1 cm around the pattern each time. Transferring on the fold means that the fabric is folded on one edge and you place the pattern on the folded edge. This will give you a symmetrical piece of fabric after cutting it out. Carefully cut out the two pieces and cut them according to the markings on the template. Make sure you work precisely so that the fir trees have a nice shape later on.

Step 2: Sewing the Christmas tree parts

Place the two pieces of fabric on top of each other with the right sides facing (this is the side of the fabric that should later be visible on the outside). Sew along the edges, but leave an opening at the bottom as a so-called "turning opening". You will need this to turn the fabric inside out later. A seam allowance of 1 cm ensures that your seams are stable enough.

Step 3: Turning and filling the fir tree

Now turn your sewn Christmas tree right side out through the turning opening. This means that the pretty sides of the fabric are now on the outside. Carefully fill the Christmas tree with wadding or another filling material of your choice until it has reached the desired shape and firmness. Make sure that all corners are well filled.

Step 4: Close the turning opening

Once your Christmas tree is sufficiently filled, close the turning opening. You can do this either by hand with an invisible stitch or with the sewing machine. Make sure you work neatly so that the seam does not stand out.

Step 5: Decorating the fir tree

Now comes the fun part: the decoration! Tie a pretty bow made of satin or jute ribbon and attach it to the top of your Christmas tree. You can either sew the bow on or hot glue it in place. Add matching sprinkles to the bow to give your Christmas tree even more charm. Let your creativity run wild and design the rest of the decorations to suit your taste.

Get creative and get your materials

Your self-sewn Christmas tree is ready to decorate your home for Christmas. Want to sew more? Visit our online store and discover our extensive range of fabrics, ideas, patterns, ribbons and other craft materials. Start your creative Christmas project today and conjure up a festive atmosphere in your home!

Dear sewer, as fabrics are seasonal goods and we always want to have trendy fabrics in stock for you, it can happen that the sewn fabric is no longer in our range.

In our fabric section you will find a large selection of great fabrics. Click [here](#) to discover [all the fabrics](#).

Must Have



Cotton fabric "Fir trees", Nature

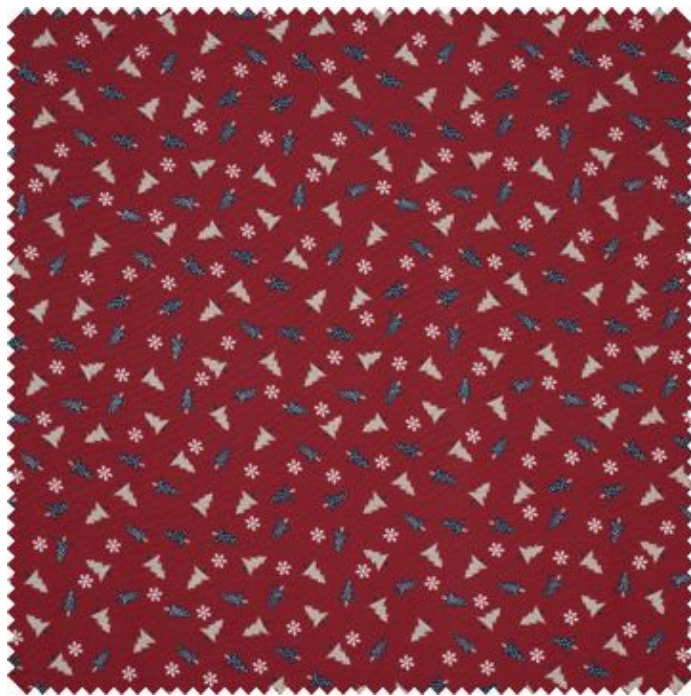
Motif size: 0.8 cm
Fabrics by the meter
Grammage: 125 g/m²
Width: 140

● **9,95 €** (1 m² = 7,11 €)

[Item details](#)

Quantity:

Add to cart 



Cotton fabric "Fir trees", Red

Motif size: 0.8 cm
Fabrics by the meter
Grammage: 125 g/m²
Width: 140

● **9,95 €** (1 m² = 7,11 €)

[Item details](#)

Quantity:

Add to cart 



New instructions

Straight to your inbox every week

register now >

Article information:

Article number	Article name	Qty
24976	Cotton fabric "Fir trees"Nature	1
24977	Cotton fabric "Fir trees"Red	1
24041	VBS Scatter decorations "Red Angel"	1
24585	Satin ribbon, 6mmDark Green	1
460132	VBS Jute ribbon, 3 mm	1
232487	VBS Fill wadding, white, 300 g	1
614085	VBS Tree bark, natural	1
686198	VBS Tea light glasses, set of 4	1
491280	Tealight candles, flat pack of 75	1
347556	KREUL Disappearing ink pen	1
51163	Hot glue gun, 15-80 Watt	1