

Star light cone from modelling clay

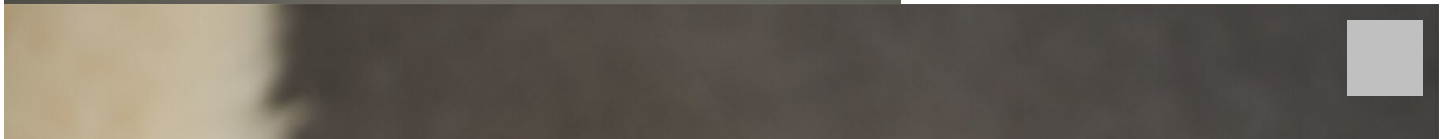
Instructions No. 1665

Difficulty: Beginner

Working time: 30 Minutes

You don't have to have learned the pottery craft for these star light cones. With Modelling clay, which dries up to a porcelain-like surface and only few aids the great light objects succeed in short time.





[Modelling clay "Porcellana fantastica", 500 g](#)

14,99 €

(1 kg = 29,98 €)

RRP 17,80 €

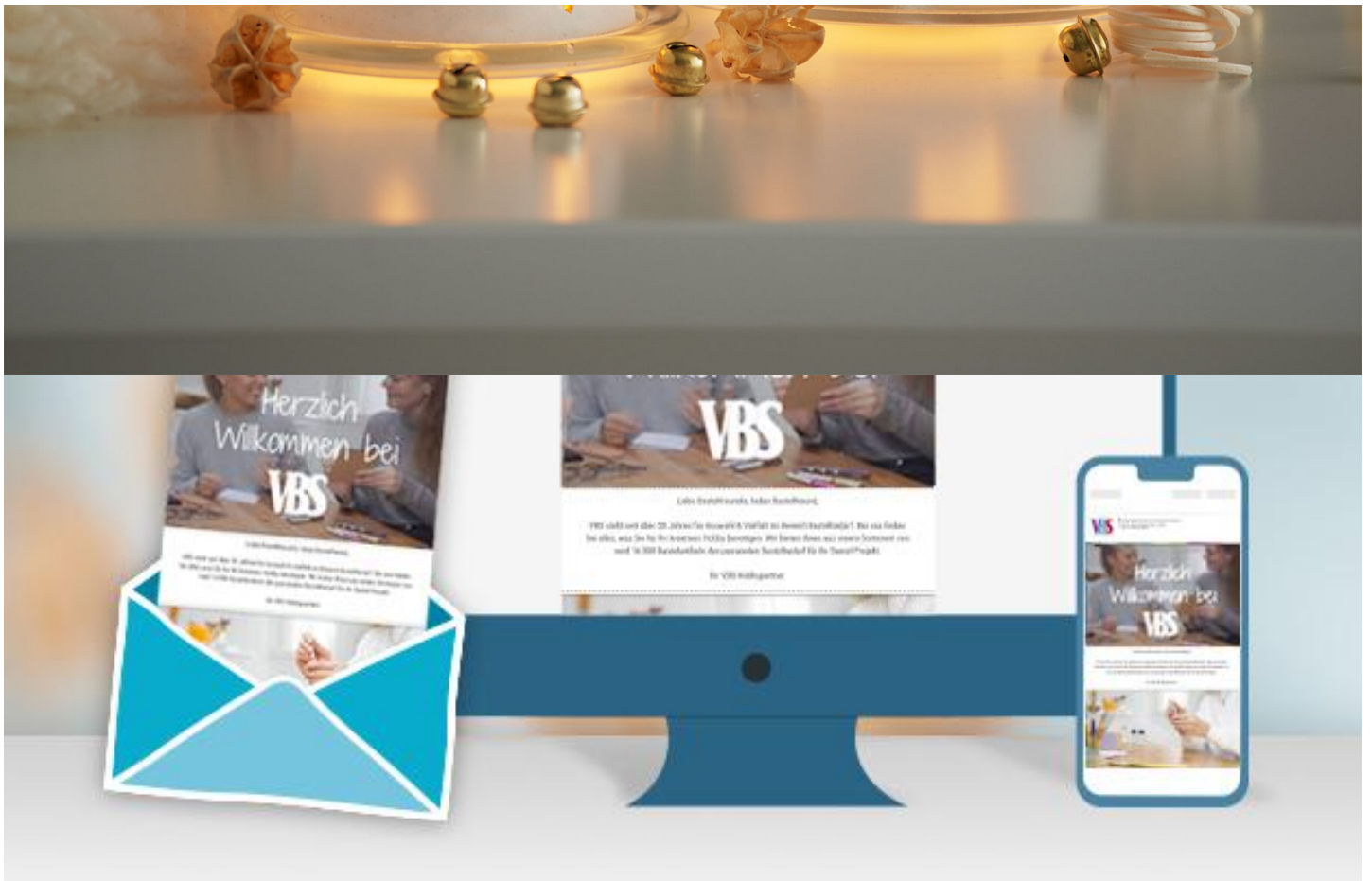
[Item](#)
[details](#)

Quantity:

1

[Add to shopping cart](#)





New instructions

Straight to your inbox every week

Register
now

Article information:

Article number	Article name	Qty
600088	Polystyrene cone 20 cm	1
511483	FIMO Acrylic Scooters	1
560085-21	VBS Craft paint, 50 mlLemon Yellow	1
121255	VBS Priming brush "Size 2", 18 mm, 10 pieces	1
687980	VBS LED tea lights, 4 pieces	1