

# Tontöpfe mit der Cricut Joy gestalten

Instructions No. 3027

Difficulty: Beginner 🍴🍴🍴🍴

Working time: 2 Hours

These decorative flower pots cut a great figure. The pots with the lettering "Let it grow" are a good example of how creative ideas can be realised quickly and easily with the plotter machine. Find out how plotting works here.



## This is how you design the terracotta pots:

First coat the **terracotta pots** with **clay sealant**. This prevents moisture from seeping out and discolouring the **acrylic paint**. Once the clay sealant has dried, you can paint the terracotta pots with the craft paint of your choice. Apply 2-3 coats of paint so that the colour covers the terracotta surface well.

### Plotting:

Download the **JPEG file** and open it in Cricut Design Space. Follow the programme's instructions to cut out the words.

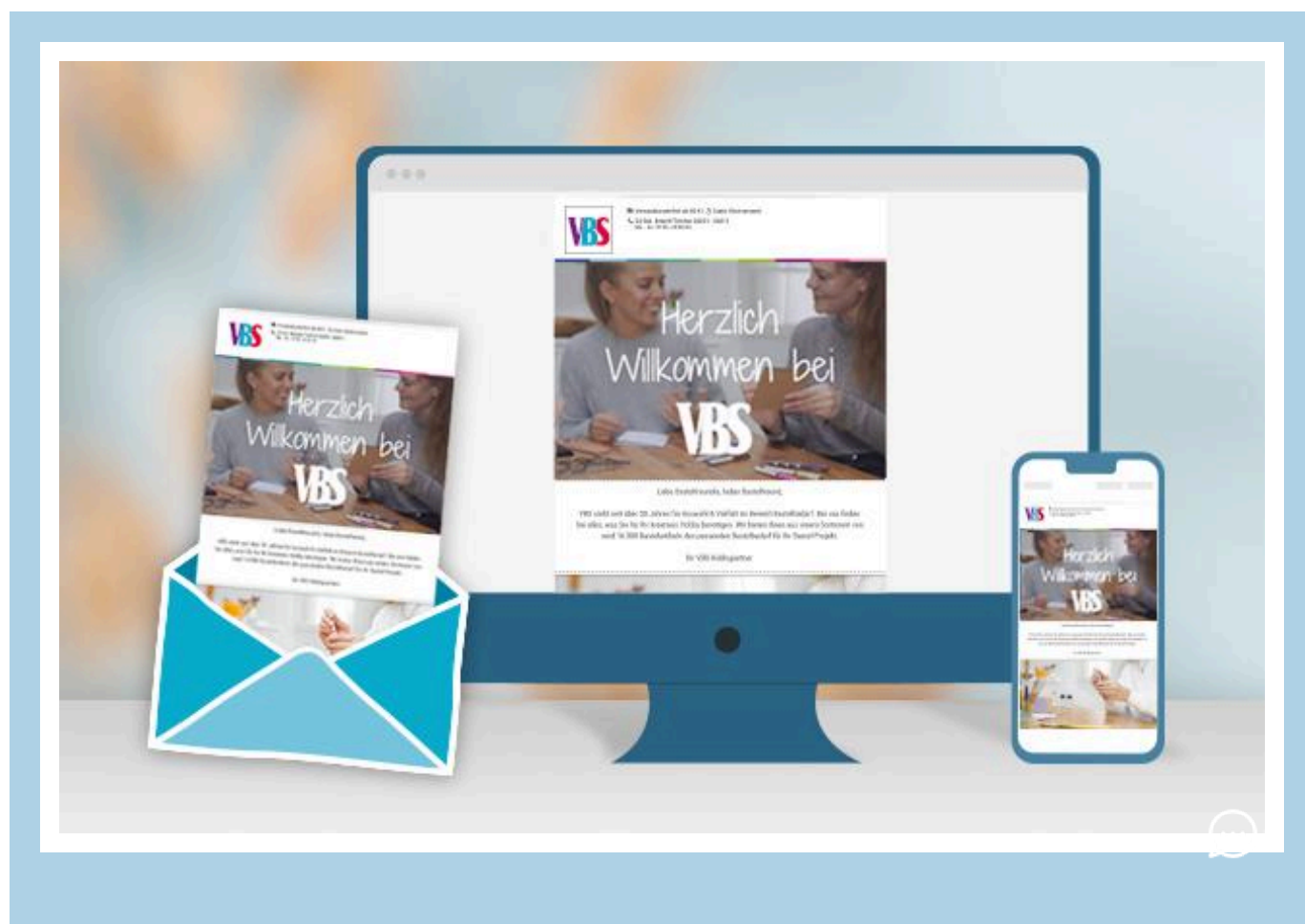
The following instructions refer to the use of a PC with a Windows operating system. For mobile devices and

other operating systems, the arrangement of the buttons may differ. The names remain the same.

1. Open the Cricut Design Space app.
2. Click on the three horizontal lines at the top left and go to "Workspace". You will now see the work mat on your screen.
3. Select any font and also the size of the font. You can set the font size at the top of the bar or drag the text field larger - hold down the "Ctrl" key to enlarge the field evenly.
4. Select your text fields and click on "Mirror" - "Mirror horizontally" at the top of the bar.
5. Then go to "Create" at the top right and select the mat and mat length immediately afterwards.
6. Finally arrange your fonts on the mat view.
7. Cut your iron-on films to size and place them on the mat with the shiny side facing down.
8. Connect your plotter and insert the mat.
9. Click on "Continue".
10. Follow the plotter's instructions, insert the mat and start the plotting process. Cut the film to the size of the mat and start the plotting process.

Remove the film around the words so that only the words are left on the backing film. Stick the transfer film over it. Then peel off the backing film and stick the words with the transfer film onto the terracotta pots. Now you can also remove this film, done.

If you don't have a plotter machine, you can also print out the templates as a PDF file, transfer them manually onto the vinyl film with a pencil and cut out the lettering.



# New instructions

Straight to your inbox every week

Register now >

## Article information:

Article number	Article name	Qty
560085-81	VBS Craft paint, 50 mlAntique White	1
560085-96	VBS Craft paint, 50 mlPastel-Olive Green	1
10492	VBS Craft paint, 50 mlAntique Rosé	1
338608	Transfer film for vinyl film	1
571135	Clay sealant	1
19021	Cricut Joy tool set "Starter Tools"	1
61713001	VBS Lavender pick "Lavendula"	1
571647-10	Terracotta potsInside-Ø 10 cm, 10 pcs.	1