

Valentine's Day Gift Candle and Memory Frame

Instructions No. 2713

Difficulty: Beginner 🍴🍴🍴🍴

Working time: 1 hour 30 Minutes

Make Valentine's Day very personal by setting the scene for YOUR date, along with a self-poured heart candle on a homemade coaster. This is a gift that everyone will love.



Pour heart candle

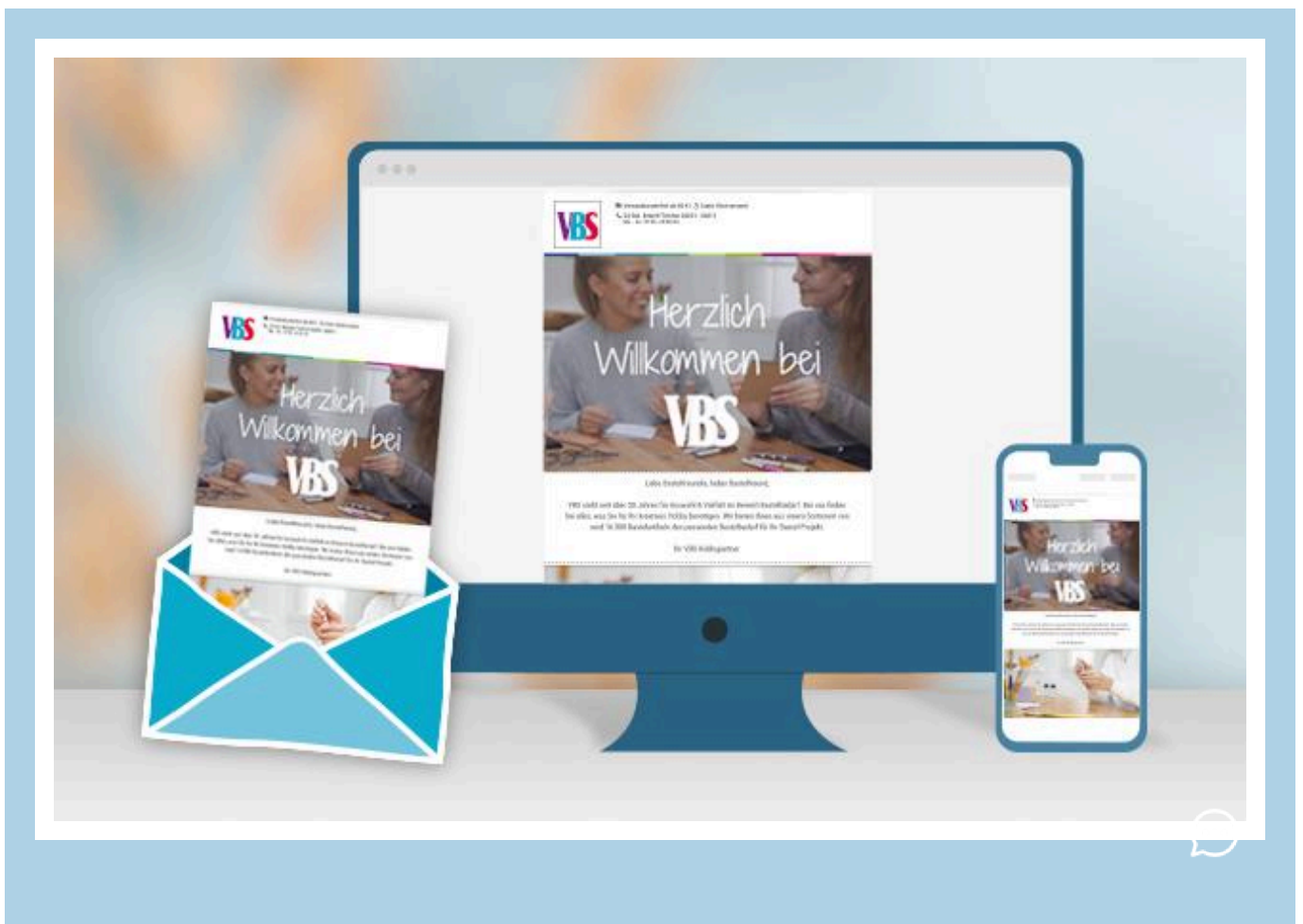
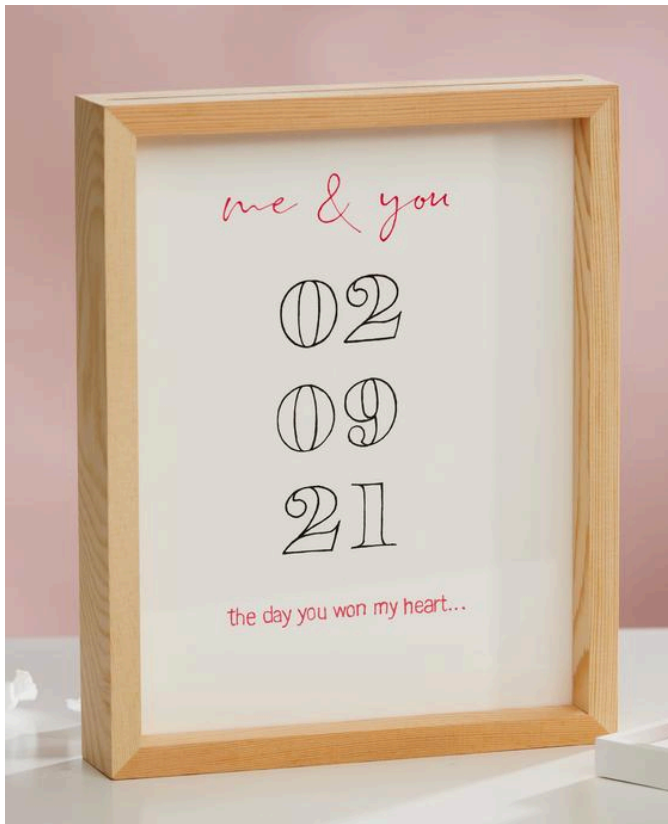
First, poke a small hole in the centre of the candle mould and pull the wick through. Now melt seven tablespoons of organic wax granulate. Add colouring granules and fragrance oil to the liquid wax as desired. Mix everything well and pour the mixture into the heart shape. As soon as the wax has dried sufficiently, you can remove the heart from the mould.

Moulding candle coasters

Mix 4 tablespoons of creative casting slip and pour it into the mould. After approx. 1 hour, the coaster is dry enough to be carefully removed from the mould.

Design the Valentine's Day picture

Cut the A4 paper to the size of the acrylic disc. Download the motif template, compose your personal date as well as the messages on another piece of paper to your individual template, place this template under the paper cutting and trace everything. To achieve a better contrast, you can trace contours with a fineliner and place them in the frame.



New instructions

Straight to your inbox every week

Register now >

Article information:

Article number	Article name	Qty
20255	Silicone candle casting mould "Heart"	1
495745-00	Organic wax500 g	1
500654-05	Wax colouring granulateRed	1
502788-06	Candle fragrance oil, 10 mlRose	1
500050	Candle wick round with base, waxed, 8 cm	1
15383	Rico Design wooden frame nature with double acrylic disc, 20 x 25 cm	1
20252	Silicone casting mould "Coaster square"	1
485555-01	Casting powder "Raysin 100", white1 kg	1
762724-02	Pigma Micron SetSize 0,45 mm	1
12055	SketchpadDIN A4	1
491402	Universal melting pot	1