

# Wicker plant basket

Instructions No. 1326

🔪🔪🔪 Difficulty: Advanced

🕒 Working time: 0 Minutes



A real classic are **floristically decorated plant baskets with** long, converging branches at the top. This variation with the **slightly inclined look** could soon be on your doorstep!

**And it is as simple as this:**

The **Wooden balls** the **Rattan cane floor** and the **Rattan cane** with a small sponge and a wood glaze mixture of chestnut and Ebony (see picture 1)

After drying the **Rattan cane** soak in water for about 45 minutes until it is sufficiently flexible.

Now shorten the 3 mm ststeps to the desired length with **aside cutter** and insert them through the holes in the bottom with a projection of approx. 5 cm.

Carefully bend these ends and braid them in a **rhythm of "before one, behind one"**, i.e. each bar **goes** around the next one on the outside and stays behind the next but one on the inside, the bars hold each other **after** drying (see picture 2).

Braid upwards in **single braid**, i.e. a 2 mm thread starts on the inside and is placed alternately in front of and behind a **bar**.

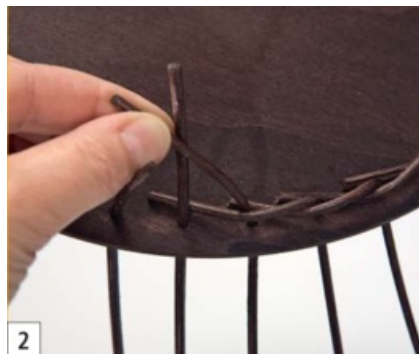
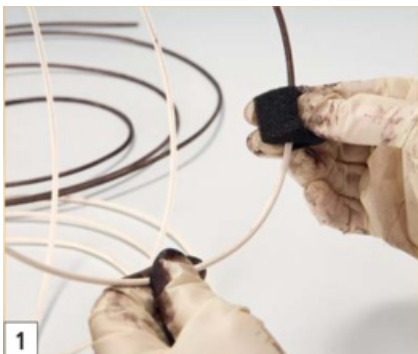
**Tip:** Since the floor has an even number of holes, the thread is laid around two stakes at the end of each round and thus runs offset in each round.

After **40 rounds**, loosely weave three **stakes** each and fix them in the desired length and shape first with wire and then with Jute yarn .

The **Rattan cane** now let it dry completely. The **Wooden balls** fix it under the floor with **wood glue**

With natural coloured **Jute ribbontie** a bow around the Jute yarn in water blue **organza** and brown **checked ribbon**.

**Fix** the **wooden flowers on** the check ribbon. Decorate the basket with **fresh green and flowers**.



Article information:

Article number	Article name	Qty
659048	VBS Base for baskets "Round"Ø 25 cm	1
650885	VBS Rattan cane natural, blue tape, Ø 2,0 mm125 g	1
650908	VBS Rattan cane natural, blue tape, Ø 3 mm125 g	1
754415-16	Wood stain, 50 mlSweet Chestnut	1
754415-18	Wood stain, 50 mlEbony	1
415712-48	Organza ribbon, 3 mmWater Blue	1
330350	VBS Painting sponges, 3 pieces	1
601573	Winding wire, green	1
970020	VBS Side cutter	1
118552	Eagle owl wood glue express	1