



Report No.: RTS210622N3031HLBG1

Date : 2021-07-09

Page 1 of 4

TEST REPORT

Test information

Applicant	:	Union international Traders.
Address	:	AMSTELDIJK NOORD 33, 1422 XX UITHOORN, THE NETHERLANDS.
Sample Description	:	Chain.
PO #	:	Not provided.
Style #	:	11809-9403.
Color	:	Not provided.
Supplier	:	Not provided.
Country of origin	:	China.
Export to	:	Not provided.
Buyer	:	Not provided.
Receiving Date	:	June 22, 2021.
Test period	:	June 22, 2021.~July 02, 2021.
Amended date	:	July 09, 2021.
Test Requested	:	Tests requested in accordance to client requirement.

<u>TEST ITEMS</u>	<u>CONCLUSION</u>
Lead(Pb) test - Entry 63 of annex XVii of reach regulation (EC)No 1907/2006 amended by commission regulation (EU) 2015/628	PASS
Cadmium(Cd) test - Entry 23 of Commission Regulation (EU) No 835/2012, (EU) No 494/2011 and (EU) No 217/2016 amending Annex XVII of REACH Regulation (EC) No 1907/2006	PASS
Entry 27 of regulation (EC)No 552/2009 amending Annex XVII of REACH regulation(EC)No 1907/2006 on the release of Nickel content(formerly known as 94/27/EC and its amendment directive 2004/96/EC)	PASS

Signed for and on behalf of
RTS TEST CO., LTD. (Zhejiang)

CHANGBIAO YU

Approved signatory



Scan to follow us



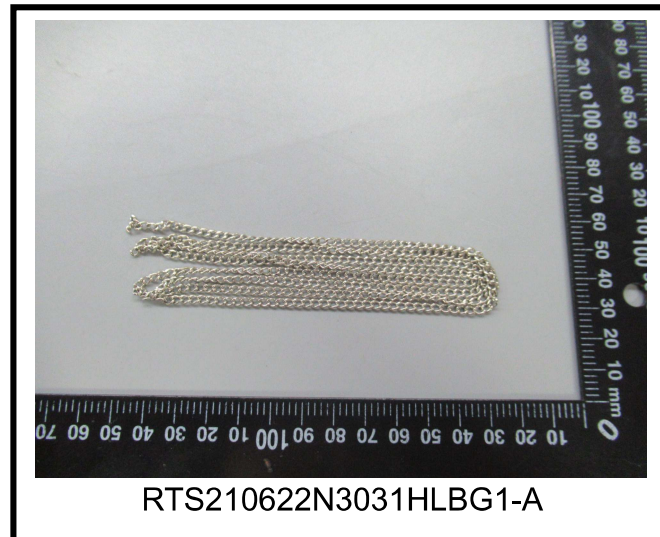
Scan for authenticity

Zhejiang RTS Test Co., LTD.

Phone: +86(0)579-85640080

Email: ruiyi-8@zj-rt.com<http://www.rtslab.com>浙江省义乌市稠江街道英才创业园B区7幢2-4层,
2-4/f, Building 7, Block B, Ying cai Business Park,
Choujiang Street, Yiwu, Zhejiang.

This Test Report is issued by the Company subject to its General Conditions of Service printed overleaf or available on request. Attention is drawn to the limitation of liability, indemnification and jurisdictional policies defined therein. The results shown in this Test report refer only to the sample(s) tested unless otherwise stated. This test report shall not be reproduced, except in full, without written approval of the Company. If in doubt, please write an email. Reports without the CMA mark are not used as proof of domestic social justice data.

Sample image:

**Test result:****A. Lead(Pb) content test:** (Unit: mg/kg)

Entry 63 of Annex XVII of REACH Regulation (EC) No 1907/2006 Amended by Commission Regulation (EU) 2015/628- Lead (Pb) test.

Test method: RTS-ZY-008 As per Metal- CPSC-CH-E1001-08.3; Nonmetal- CPSC-CH-E1002-08.3 or Surface coating- CPSC-CH-E1003-09.1, Was analyzed by flame atomic absorption spectrometry(AAS) or Inductively Coupled Plasma Optical Emission Spectrometer (ICP-OES).

Test Number	Item/ component description(s)
A1	Silvery plating metal (chain)

Test item	Test Number	MDL	Test Result	Maximum permissible limit	Conclusion
Lead (Pb)	A1	5	7	500	PASS

Note:

- 1) MDL=Method Detection Limit.
- 2) N.D. = not detected, less than MDL.
- 3) "▲" = This data is obtained from composite testing on more than one materials or shapes, it is possible that result obtained from individual testing on any one of the materials or shapes is substantially higher. Please be cautious when using this data for compliance evaluation.

B. Cadmium(Cd) content test: (Unit: mg/kg)

Entry 23 of Annex XVII of REACH Regulation (EC) No 1907/2006 Amended by Commission Regulation (EU) No 835/2012, (EU) No 494/2011 and (EU) No 217/2016- Cadmium (Cd) test

Test method: RTS-ZY-008 As per Metal- CPSC-CH-E1001-08.3; Nonmetal- CPSC-CH-E1002-08.3 or Surface coating- CPSC-CH-E1003-09.1, Was analyzed by flame atomic absorption spectrometry(AAS) or Inductively Coupled Plasma Optical Emission Spectrometer (ICP-OES).

Test Number	Item/ component description(s)
A1	Silvery plating metal (chain)

Test item	Test Number	MDL	Test Result	Maximum permissible limit	Conclusion
Cadmium (Cd)	A1	5	N.D.	100	PASS

Note:

- 1) MDL=Method Detection Limit.
- 2) N.D. = not detected, less than MDL.
- 3) "▲" = This data is obtained from composite testing on more than one materials or shapes, it is possible that result obtained from individual testing on any one of the materials or shapes is substantially higher. Please be cautious when using this data for compliance evaluation.

**C. Nickel Release content test:(Unit: $\mu\text{g}/\text{cm}^2/\text{week}$)**

Entry 27 of Regulation (EC) No 552/2009 amending Annex XVII of REACH Regulation (EC) No 1907/2006 on the release of Nickel content(formerly known as 94/27/EC and its amendment directive 2004/96/EC)

Test Method: According to EN 12472:2005+A1:2009 & BS EN1811:2011 +A1:2015 / BS EN1811:2011 +A1:2015. Analysis was performed by ICP-OES.

Test Number	Item/ component description(s)
A1	Silvery plating metal (chain)

Testing details	MDL	Sample No.
		A1
Sample Area(cm^2)	-	4.2
Volume of test solution(ml)	-	5
Nickel Release-Trial 4	0.01	N.D.
Nickel Release-Trial 5	0.01	N.D.
Nickel Release-Trial 6	0.01	N.D.
Limit value	-	0.5
Conclusion(s)	-	PASS

Note:

- 1) MDL=Method Detection Limit.
- 2) N.D. = not detected, less than MDL.
- 3) “▲” = This data is obtained from composite testing on more than one materials or shapes, it is possible that result obtained from individual testing on any one of the materials or shapes is substantially higher. Please be cautious when using this data for compliance evaluation.

Remark:

Directive	Item	Maximum Permissible Limit ($\mu\text{g}/\text{cm}^2/\text{week}$ of nickel migration)
Entry 27 of Regulation (EC) No 552/2009 amending Annex XVII of REACH Regulation (EC) No 1907/2006 on the release of Nickel content(formerly known as 94/27/EC and its amendment directive 2004/96/EC)	Products intended to come into direct and prolonged contact with skin	0.5
	All post assemblies which are inserted into pierced ears and other pierced parts of the human body	0.2

- 1) The sample of trial 1, 2 and 3 were tested according to BS EN1811:2011 +A1:2015.
- 2) The sample of trial 4, 5 and 6 were tested according to EN 12472:2005+A1:2009 & BS EN1811:2011 +A1:2015.
- 3) For articles intended to come into direct and prolonged contact with the skin:
According to BS EN1811:2011 +A1:2015 Article shall be accepted and be permitted to be placed on the market if the measured value is less than $0.88\mu\text{g}/\text{cm}^2/\text{week}$.
- 4) For all post piercing assemblies inserted into pierced ears and other pierced parts of the human body:
According to BS EN1811:2011 +A1:2015 Article shall be accepted and be permitted to be placed on the market if the measured value is less than $0.35\mu\text{g}/\text{cm}^2/\text{week}$.

----- End of Report -----

Zhejiang RTS Test Co., LTD.

Phone: +86(0)579-85640080
Email: ruiyi-8@zj-rt.com
<http://www.rtslab.com>
浙江省义乌市稠江街道英才创业园B区7幢2-4层.
2-4/f, Building 7, Block B, Ying cai Business Park,
Choujiang Street, Yiwu, Zhejiang.

This Test Report is issued by the Company subject to its General Conditions of Service printed overleaf or available on request. Attention is drawn to the limitation of liability, indemnification and jurisdictional policies defined therein. The results shown in this Test report refer only to the sample(s) tested unless otherwise stated. This test report shall not be reproduced, except in full, without written approval of the Company. If in doubt, please write an email.