



Krama Coaster

S10828





S10828

V.1/JS/DS

Krama Coaster

Design: Jennifer Stiller

 Crochet

 Easy



Recommended Yarn

SIZE

approx. 12 cm x 12 cm

MATERIALS (6 coaster)

Schachenmayr Catania Grande, 50 g ball

Approx. 50 g ≈ 63 m

Col. 03105 (natur) 2 balls

Col. 03110 (schwarz) 2 balls

1 crochet hook 4.0 mm

1 tapestry needle for weaving in ends

GAUGE

In basic pattern:

14 st and 21 rows = 10 x 10 cm

COLOR SEQUENCE

Coaster A:

Ch 16 + 1 tch, rows 1–25: Natur

Coaster B:

Ch 16 + 1 tch, rows 1–25: Schwarz

Coaster C:

Ch 16 + 1 tch, rows 1 - 3: Schwarz

Rows 4 - 7: Natur

Rows 8 - 11: Schwarz

Rows 12 - 15: Natur

Rows 16 - 19: Schwarz

Rows 20 - 23: Natur

Rows 24 - 25: Schwarz

Coaster D:

Ch 16 + 1 tch, rows 1 - 9: Natur

Rows 10 - 17: Schwarz

Rows 18 - 25: Natur

Coaster E:

Ch 16 + 1 tch, rows 1 - 13: Schwarz

Rows 14 - 15: Natur

Rows 16 - 19: Schwarz

Rows 20 - 25: Natur

Coaster F:

Ch 16 + 1 tch and work R 1 in Schwarz, then work R 2 in Natur and alternate between the two colors.

A NOTE ON CHANGING COLOR

When changing colors, fasten off the last st with the new color to achieve a perfect color transition.

BASIC TECHNIQUE

Lower sc:

In the next st, insert hook 3 R lower, draw through and pull the yarn to the working level. Fasten off both loops on the hook.

INSTRUCTIONS

Starting loosely, ch 16 + 1 tch in Natur or Schwarz.

R 1: Work 1 sc in every st, with the 1st sc in the 2nd ch from the hook, 1 tch, turn over (= 16 st)

R 2 and 3: Work 1 sc in every st, 1 tch, turn over (= 16 sts)

R 4: Work 1 lower sc in every st, 1 tch, turn over (= 16 sts)

Rep rows 1 and 4 five times until you have worked a total of 24 rows.

R 25: Work 1 sc in every st (= 16 st).

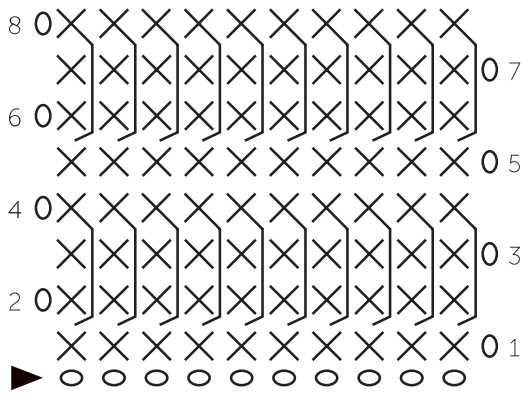
Draw through and cut thread.

FINISHING OFF

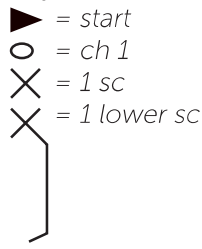
Secure all threads with a darning needle.

Dampen and block the coaster to the right size, and allow to dry.

Chart



Key



ABBREVIATIONS

- st = stitch
- sc = single crochet
- slst = slip stitch
- ch = chain
- st(s) = stitch(es)
- rnd(s) = round(s)