



Irma
Shawl

S10725





S10725

V.1/SMT

Irma Schawl

Design: Schachenmayr Designteam



Knitting



Easy



Recommended Yarn

SIZE

approx. 57" (145 cm) long and 13³/₄" (35 cm) high.

MATERIALS

Schachenmayr Impression, 100 g ball

about 290 m/100 g (3.5 oz ≈ 317 yds)

Color 00083 (winter sky color)

1 ball

1 circular needle, size 4 mm (US 6), 32" (80 cm) long

1 crochet hook, size 4 mm (US F/5)

GAUGE

Garter stitch

24 sts and 42 rows = 4" x 4" (10 x 10 cm).

Take time to check your gauge. If you have too many stitches and rows, switch to larger needles. If you have too few stitches and rows, switch to smaller needles.

THE BASICS

Selvage stitch: Slip the 1st stitch (st) of the row, with the yarn behind the st. In wrong side (WS) rows, knit the last st; in right side (RS) rows, increase in the last st as shown in the chart.

Garter stitch: Knit RS and WS rows.

increase 1 stitch: In 1 st, knit 1 into front loop and knit 1 into back loop.

skp: Slip 1 st knitwise, knit 1, then pass slipped st over.

slipped double decrease: Slip 2 sts together knitwise, knit 1, then pass the 2 slipped sts over.

Basic pattern: Work in rows following the chart. Only the RS rows are shown. In WS rows, knit all sts and yarn-overs. Work rows 1 to 16 once, then repeat rows 11 to 16 continuously, working the lace border on the right edge, over 8 sts, and working increases on left edge (see also row 17, marked in gray). Work all remaining sts in garter stitch. After every 6th row, the number of garter sts is increased by 4.

INSTRUCTIONS

Cast on 5 sts. Knit the 1st row (= WS row). Now continue in basic pattern, following the chart. When approx. 20 yds (18 m) = 5 g of yarn remain, bind off all sts in the following RS row. Crochet over the bound-off edge, working alternately

1 single crochet and 3 chains, and working the single crochets in every 2nd st of the bound-off edge. On the right edge of the shawl (= long edge), work single crochets. Hide yarn ends. Block the shawl, dampen, and let dry.

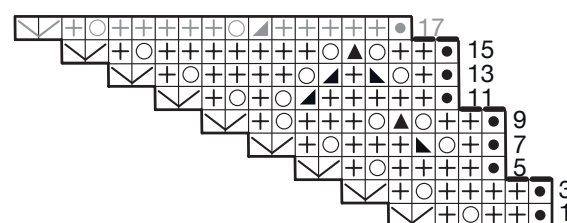
ABBREVIATIONS

RS = right side

st = stitch

WS = wrong side

Strickschrift



Legend

- ◻ = 1 selvage st
- ⊕ = 1 garter stitch: knit in right side and wrong side rows
- ⊗ = 1 yarn over
- ◼ = skp
- ◼ = knit 2 together
- ◼ = slipped double decrease
- ◻ = increase 1 st
- ◻ = bind off 1 stitch